

# Evgenii Ermolenko

## About me

Young dedicated architect. Meanwhile experienced BIM specialist with over 3 years of professional international experience and MSc in BIM. Adept in computational generative & parametric design. In total, have 8 years' experience closely associated with BIM and computational design, studying and working in diversified environment in Russia, South Korea, Portugal, Italy, and Slovenia. Personal area of interests lays on conjunction between engineering, science, and art. Believe in its singularity. Bringing forth a commitment to innovative approach and excellent vision.



Russia

Email:

erarchitech@gmail.com

Phone:

+7 981 757 44 30

athmos.life

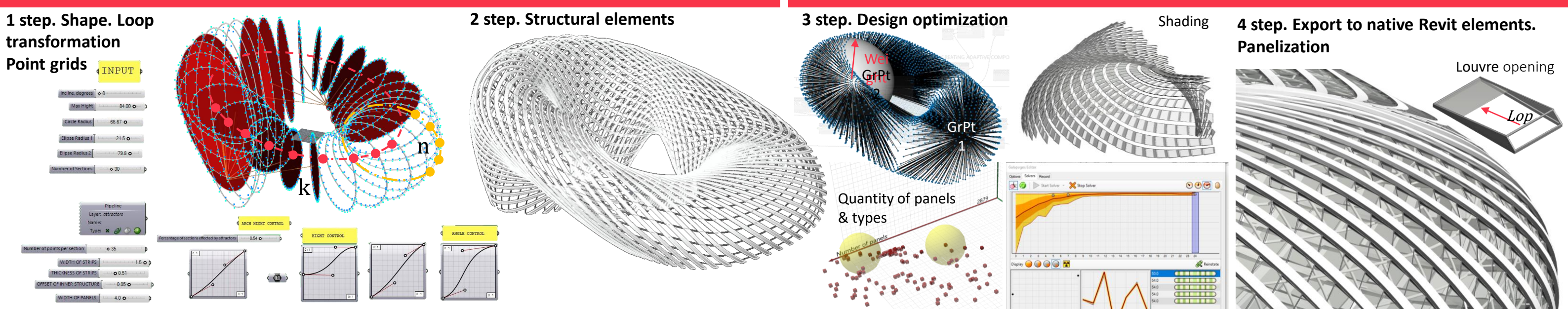


## Previous academic record

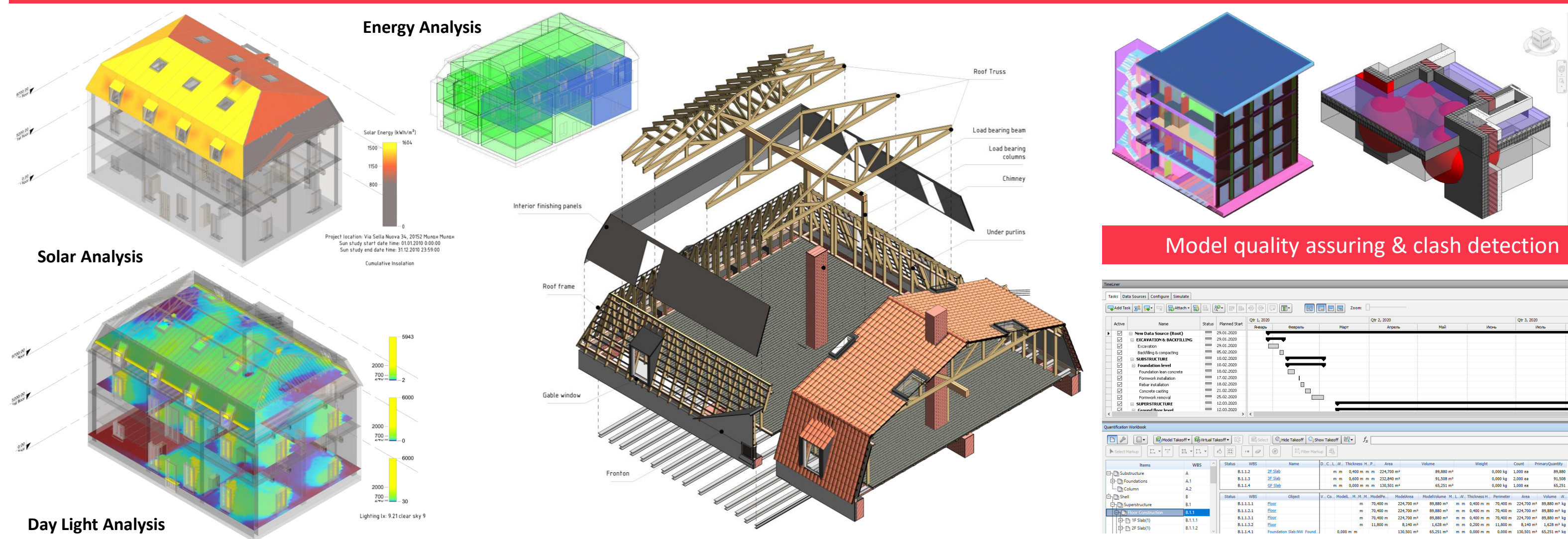
- 2019-2020 BIM A+ Erasmus European MSc in BIM, Polytechnic University of Milan, University of Minho, University of Ljubljana. Thesis theme: "Accelerated Project Development through Scripting and Workflows"
- 2011-2017 B.A. in Architecture, Pacific National University, Russia;
- 2014-2015 Seokyeong University, Seoul, Republic of Korea, International Business Language;
- 2017-2019 BIM Academy, Moscow, Russia; course: BIM, Generative & Parametric design;

## Professional experience

- 2018-2020 BIM-specialist, surveyor, Zarya Architects Ltd, S. Petersburg, Russia
- 2017-2019 Architect, BIM-coordinator, NN Development Ltd, Saint-Petersburg, Russia
- 2015 – Architect Intern, Dong Myeong Engineering Consultants & Architecture Co., Ltd, Seoul, Korea
- 2015-2017 Real estate consultant, Global National BioProducts Co., Khabarovsk, Russia



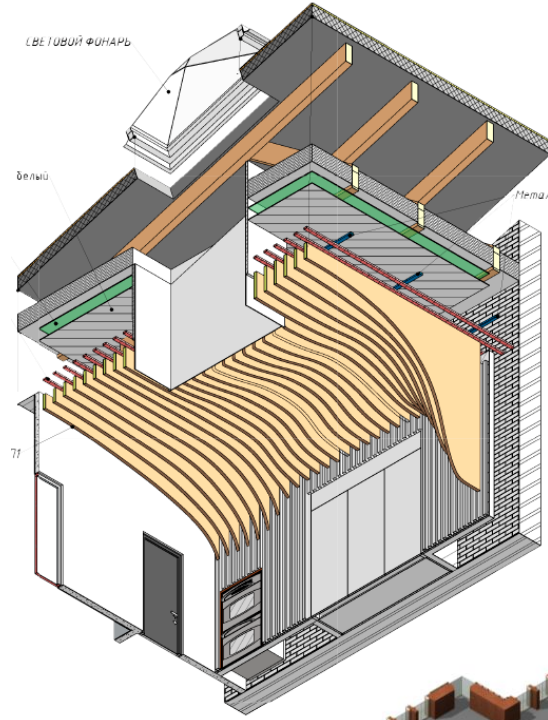
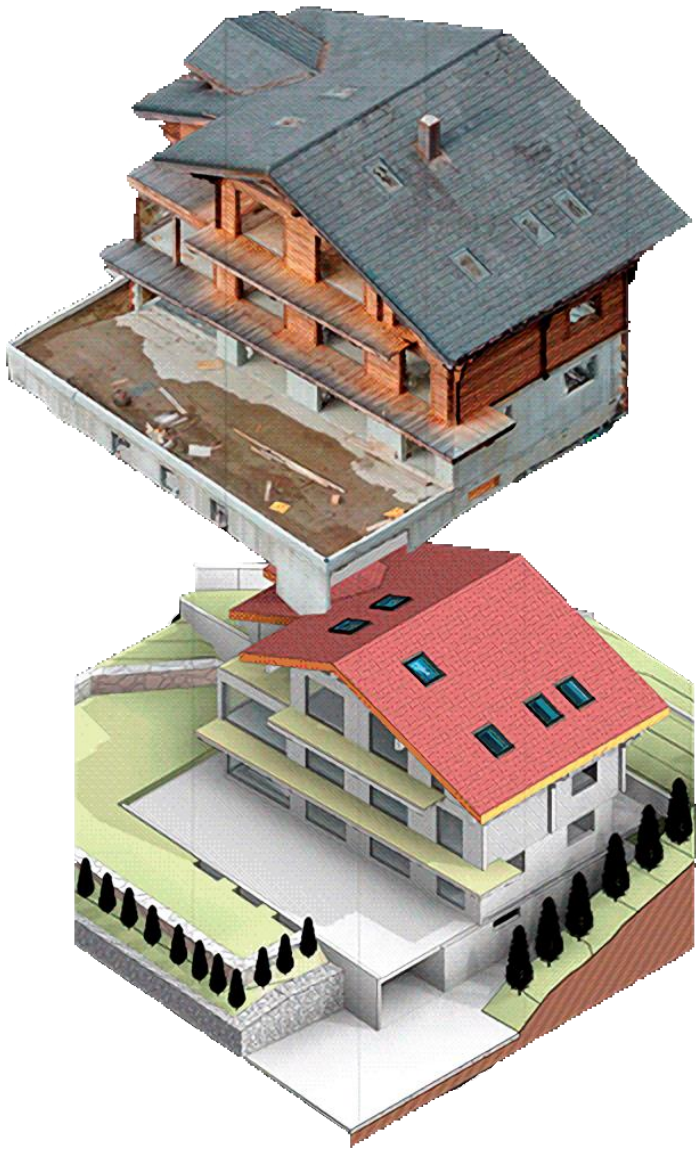
Parametric model. Generative scheme



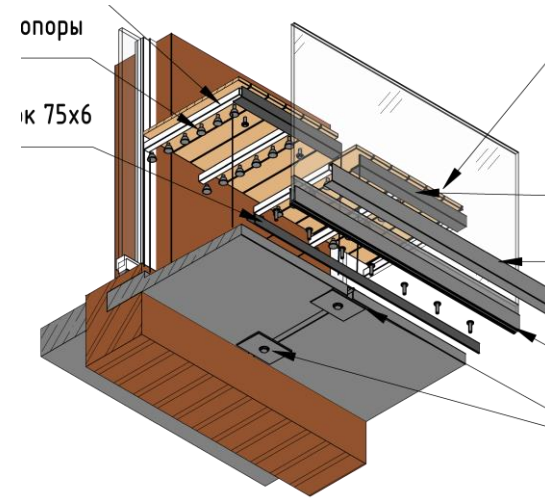


## Previous experience

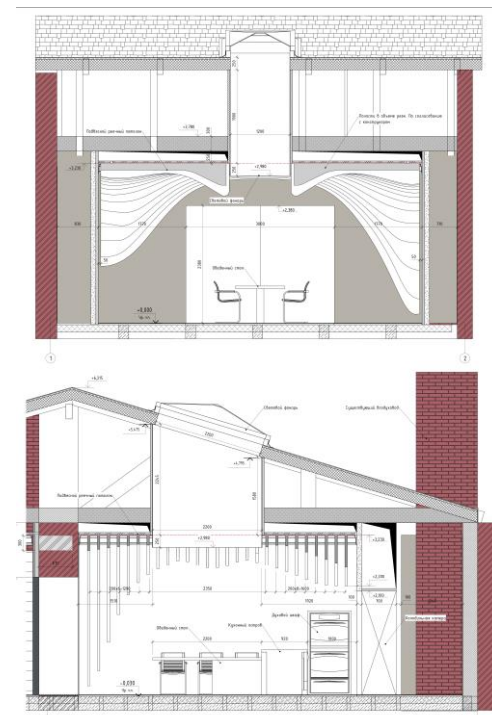
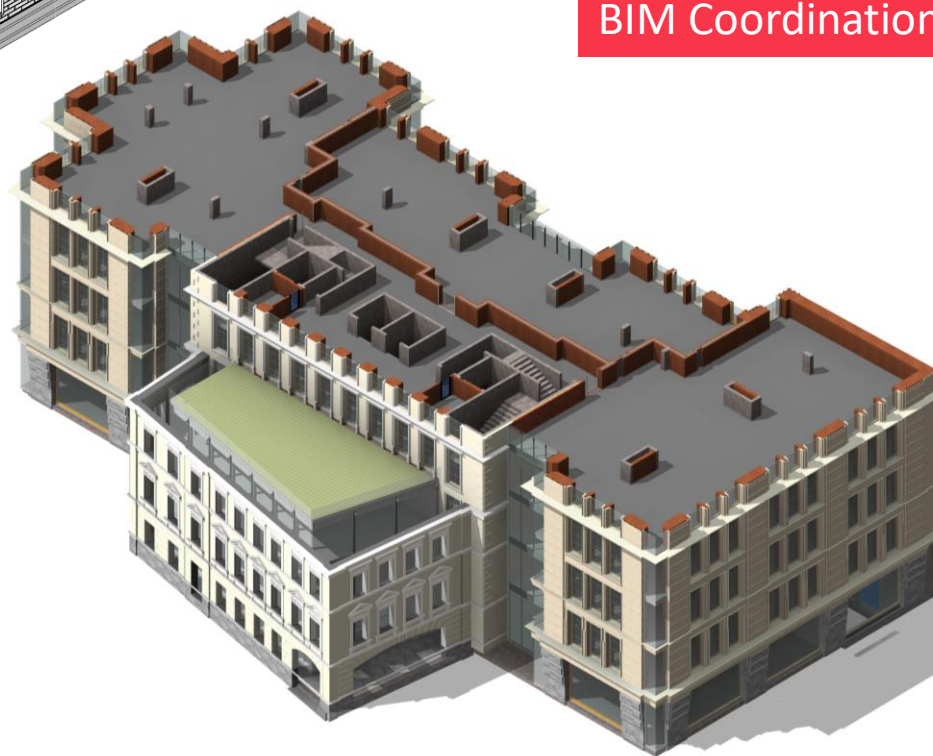
Photogrammetry & laser scanning



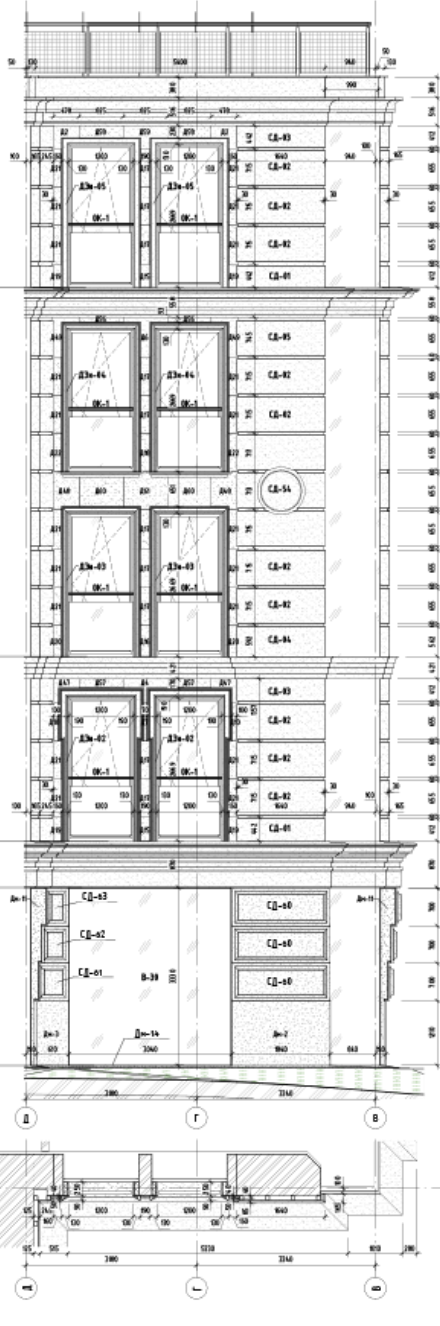
3D details



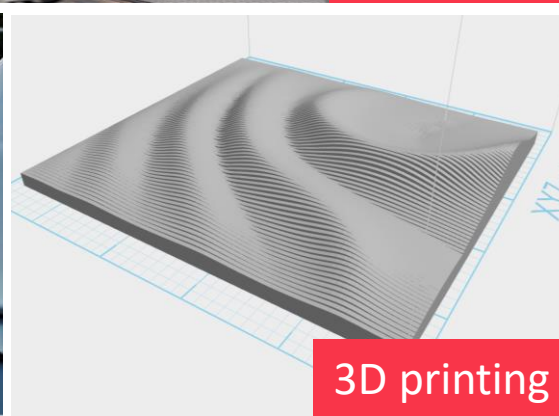
BIM Coordination



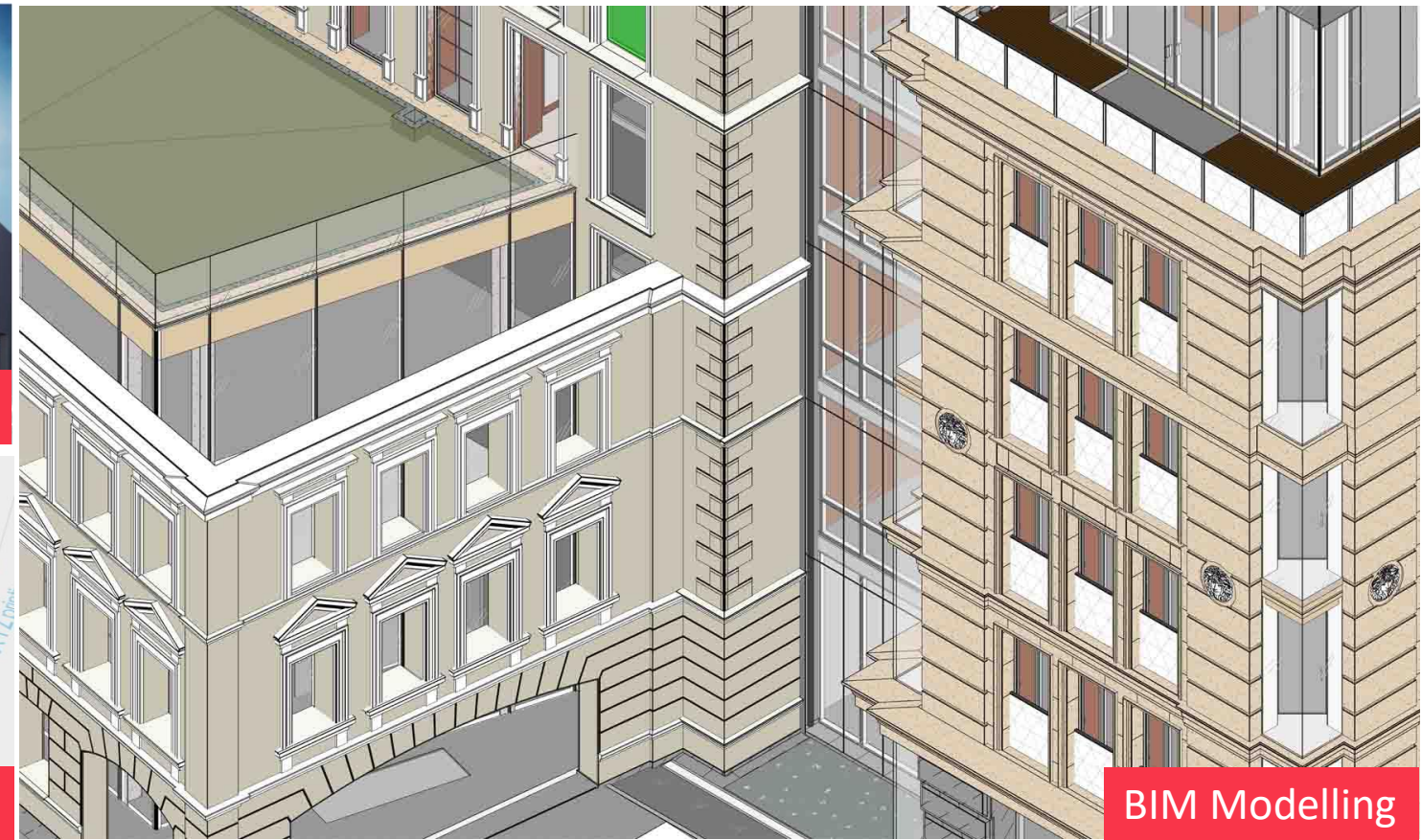
BIM Authoring



Rendering

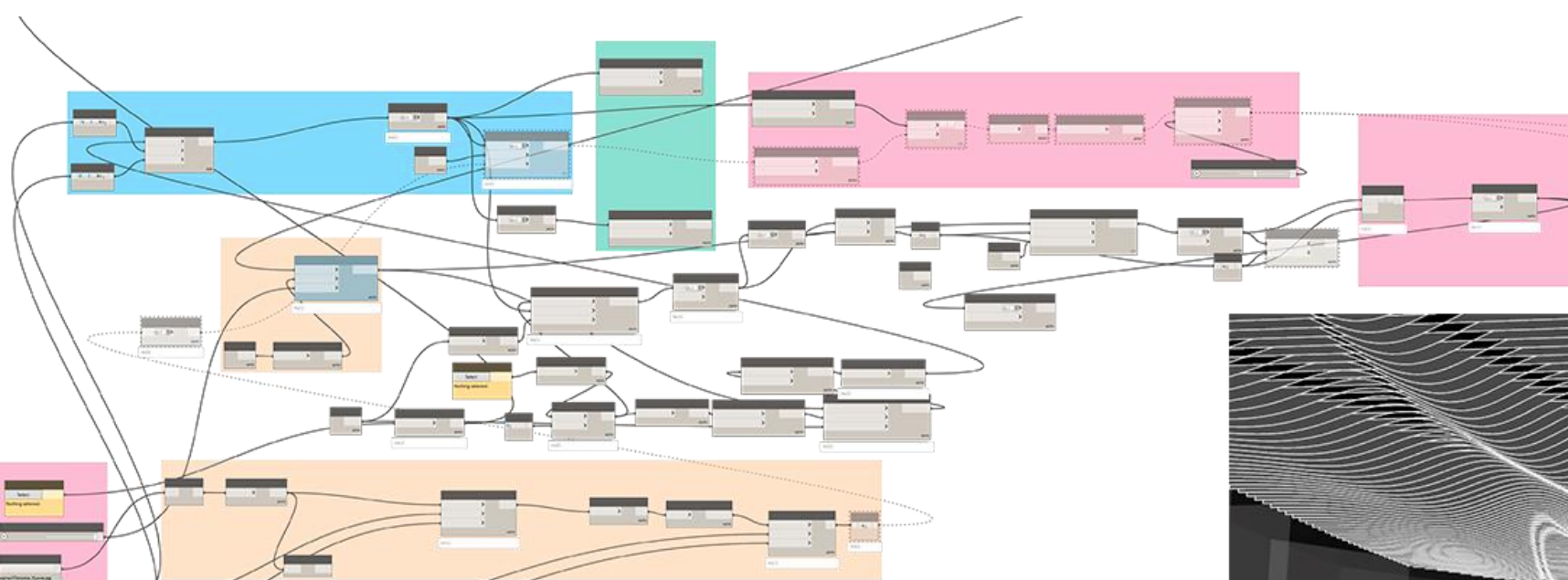


3D printing

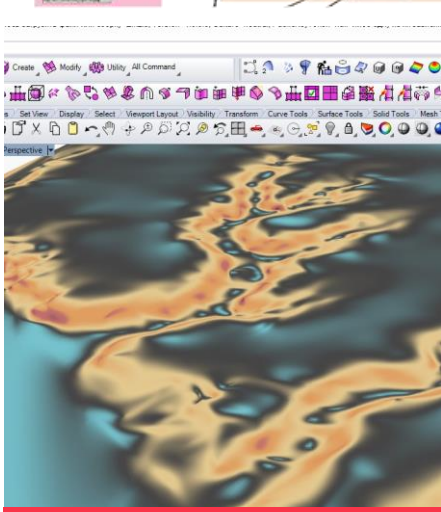
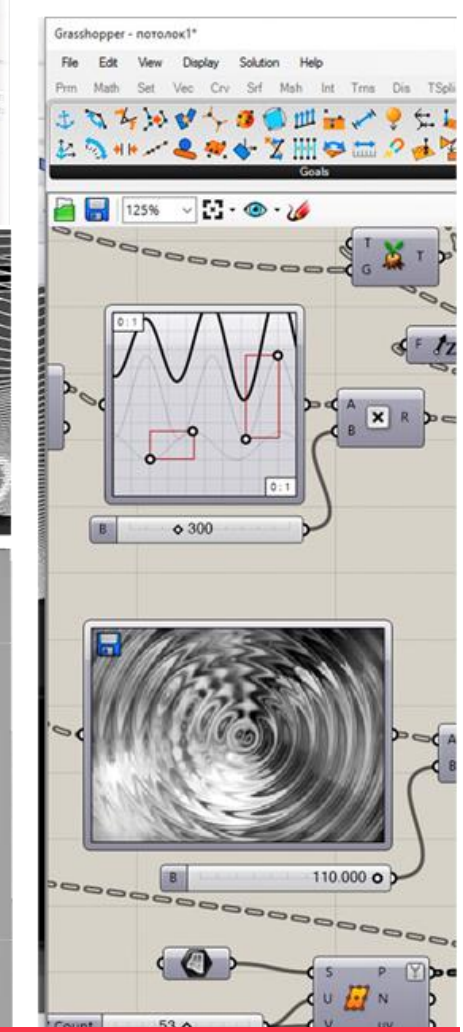
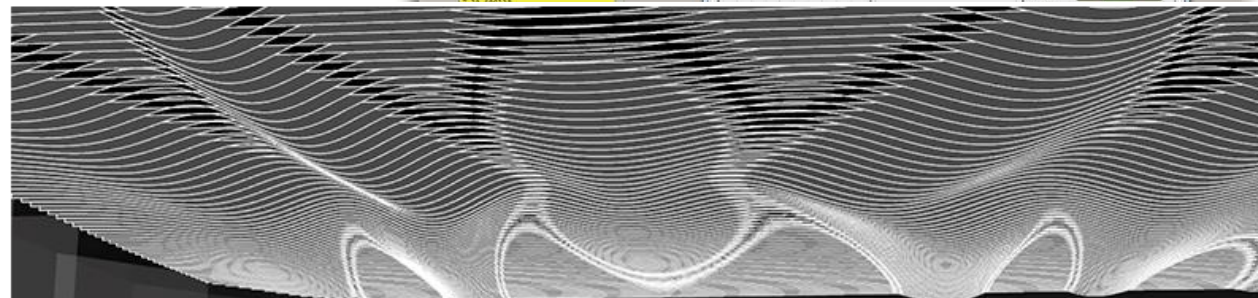


BIM Modelling

Parametric modelling



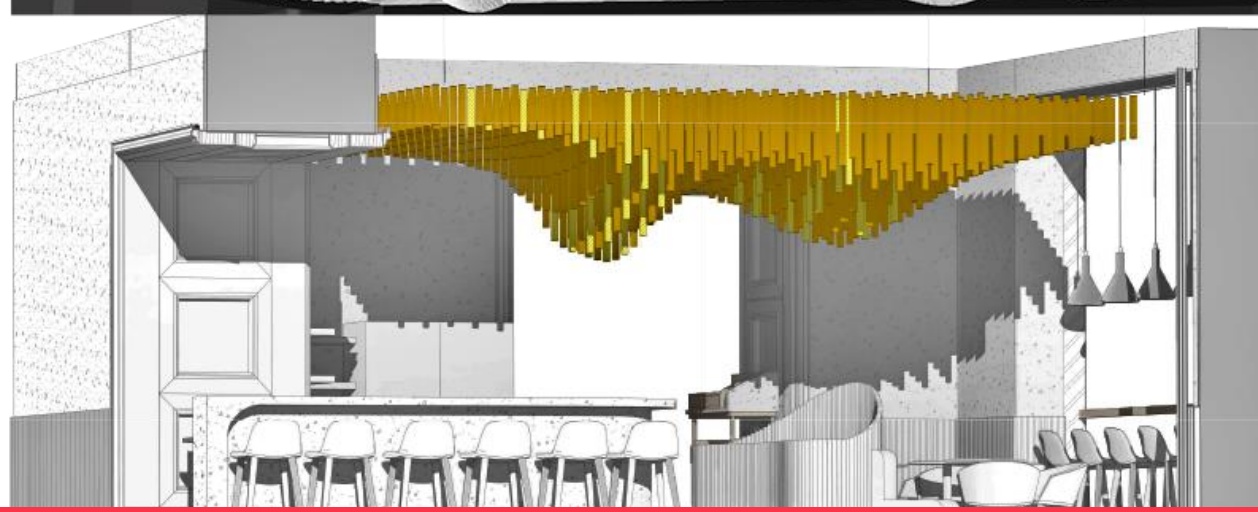
Optimization with Galapagos



Landscape analysis



Ceiling after manufacturing



Interior design and authoring using parametric model